

# DOCAVE BACKUP & RESTORE

## FOR MICROSOFT® SHAREPOINT® BACKUP & RESTORE

**Protect.** Business-aware and comprehensive protection of SharePoint Server 2016, SharePoint Server 2013, SharePoint Server 2010, virtual machines (VM), SharePoint Online, and OneDrive for Business.

### KEY BENEFITS

 <p><b>COMPREHENSIVE BACKUP</b></p>	 <p><b>BUSINESS CONTINUITY</b></p>	 <p><b>SLA SATISFACTION</b></p>	 <p><b>CENTRALIZED MANAGEMENT</b></p>
<p>Protect your organization from data loss with truly comprehensive backup for your entire SharePoint environment, including all content, customizations, solutions, apps, features, and the VMs hosting your SharePoint servers.</p>	<p>Minimize business disruptions caused by service interruptions or accidental deletions with efficient and fast recovery of all SharePoint components, databases, indexes, and configurations through advanced snapshot technology.</p>	<p>Satisfy even the most aggressive Service Level Agreements (SLAs) by minimizing downtime, data loss, and restore times with granular restore of select SharePoint components, including content security and properties.</p>	<p>Track, manage, and report on all backup and restore processes through a centralized management console to monitor and enforce compliance with SharePoint SLAs.</p>

## FAST, FLEXIBLE, & INTELLIGENT DATA PROTECTION SOLUTION FOR SHAREPOINT

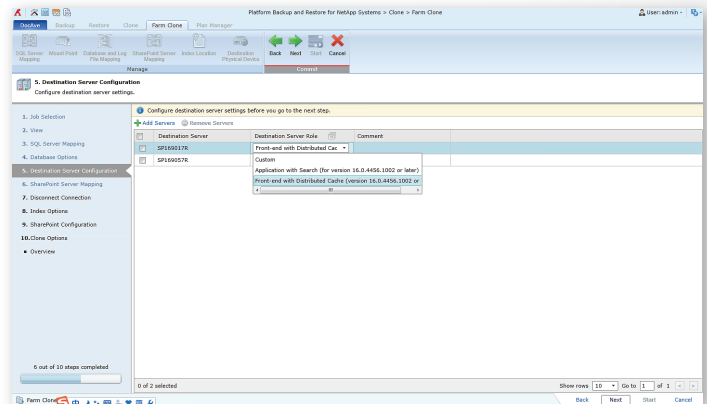
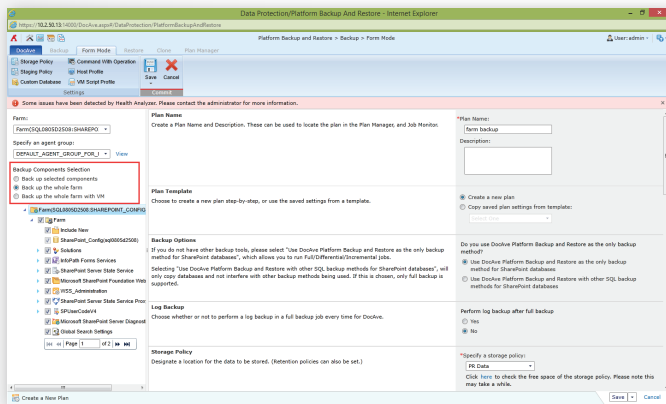
DocAve Backup and Restore for SharePoint provides full-fidelity backup and recovery – from individual content items to entire SharePoint environments and all of their farm-level components – maintaining all metadata, security settings, and version histories. Featuring a highly intuitive user interface, enterprise-strength scalability, and deep integration with leading hardware providers, DocAve Backup and Restore offers simple and truly comprehensive SharePoint protection.



**FREE**  
30-DAY TRIAL

# TECHNICAL OVERVIEW

- Protect multiple SharePoint environments – whether hosted on premises, a hybrid deployment, or on cloud platforms such as Microsoft Office 365, OneDrive for Business, and VMs – to centrally manage SLAs across SharePoint assets from a single interface
- Fast backup and restore of entire SharePoint farms or selective components, including back-end Microsoft SQL Server databases with all configurations, Index/Job/Search/FAST servers, front-end IIS settings, file system resources, third-party or custom application databases, stub databases, BLOB stores, and entire VMs, with robust VSS, VDI, or advanced NetApp snapshot technology
- Full-fidelity backup and granular restore of all SharePoint content, including web applications, site collections, sites, apps, Recycle Bins, lists, libraries, items, workflow definitions and instances, configurations, permissions, metadata, and version histories with SharePoint API technology
- Full, incremental, and differential backup capabilities enable backup plans and schedules to focus on frequent backup of high-priority or failed data from previous jobs, improving backup operations, and storage efficiency
- Preview and double-check backup documents before performing a document restore to ensure accuracy
- Perform fast, granular restores of SharePoint content and components, including databases, site collections, apps, Recycle Bins, sites, lists/libraries, items, security, properties, service applications, solutions, as well as other custom objects through DocAve or directly through SharePoint via end-user restore of web parts
- Easily recover entire SharePoint environments with the Farm Rebuild Wizard by restoring externalized BLOB data, SQL Server databases, and Index servers with step-by-step guidance, or simply restoring the SharePoint server VMs and SQL Server databases to original SharePoint and SQL Servers
- Clone source SharePoint environments with the complete data from VMs, farms, WFE servers, web application servers, and SQL Server databases to a destination environment in order to easily build a full-order testing-staging-production SharePoint system
- Repair one or multiple SharePoint servers within the specified farm with a one-click fix capability to reduce response time when system errors occur – such as failing to open the Central Administration page
- Rapidly restore SharePoint content with AvePoint's InstaMount technology, enabling fast recovery of individual items to the production environment from a full database backup without first staging the database
- Reduce data recovery time to minutes by generating persistent backup snapshots using advanced NetApp technology, and granularly restore from hardware-based snapshots to achieve robust RPOs and RTOs
- Backup to the most commonly used storage platforms including Net Share, FTP, Amazon S3, AT&T Synaptic, Box, Caringo Storage, Cleversafe, DELL DX Storage, Dropbox, EMC Atmos, EMC Centera, Google Drive, HDS Hitachi Content Platform, IBM Storwize Family, NetApp Data ONTAP, OneDrive, Rackspace Cloud File, TSM, and Microsoft Azure Storage
- View all web applications, site collections, or sites that have been backed up through a comprehensive, centralized dashboard



## Quickly create platform or granular backup and restore plans with DocAve's easy-to-use wizard.

For a comprehensive list of new features in this release, please view our [DocAve 6 Service Pack 9 Release Notes](#).

## How to Buy DocAve

Call: 201.793.1111  
E-mail: [Sales@AvePoint.com](mailto:Sales@AvePoint.com)

Evaluate DocAve for free at:  
[www.AvePoint.com/download](http://www.AvePoint.com/download)

**AvePoint Global Headquarters**  
525 Washington Blvd. Suite 1400  
Jersey City, NJ 07310  
Phone: 201.793.1111 Fax: 201.217.8709



**For US Government Organizations:**  
DocAve can be purchased directly from  
AvePoint or through the GSA website at  
[www.GSAadvantage.gov](http://www.GSAadvantage.gov).

See why you should choose AvePoint as a strategic SharePoint partner, visit [www.avepoint.com/about](http://www.avepoint.com/about).

Join the AvePoint community at [www.avepoint.com/community](http://www.avepoint.com/community).

Accessible content available upon request.