





DOCAVE LIVELINK MIGRATOR

FOR MICROSOFT® SHAREPOINT® MIGRATION

Migrate. Quickly consolidate enterprise content from OpenText® Content Server (Livelink) into Microsoft SharePoint Server and SharePoint Online.

KEY BENEFITS

 <p>LEGACY ASSET PROTECTION</p>	 <p>BUSINESS CONTINUITY</p>	 <p>FLEXIBLE MIGRATION AND SCHEDULING</p>	 <p>HIGH SPEED MIGRATION TO OFFICE 365</p>
<p>Protect investments in Livelink content with lossless migration into SharePoint. Transfer Livelink content to SharePoint in an organized and efficient manner to improve IT productivity and reduce the time-to-value for deploying SharePoint.</p>	<p>With comprehensive mapping of Livelink elements to their associated SharePoint objects, everything is kept in sync to ensure no interruption to online projects.</p>	<p>Reorganize your information architecture upon migration to clean up existing clutter. Empower administrators to plan migration jobs according to business needs, with granular or bulk content migration and flexible job scheduling.</p>	<p>Migrate large quantities of content from Livelink to Office 365 more than ten times (10x) faster than before, while ensuring full fidelity around your content.</p>

MIGRATION TO SHAREPOINT MADE EASY

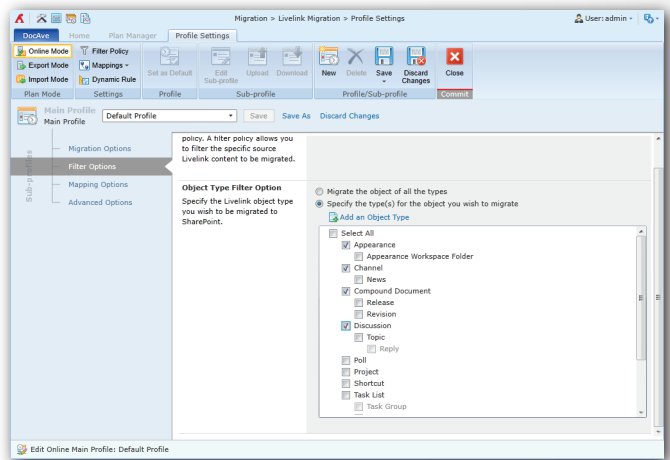
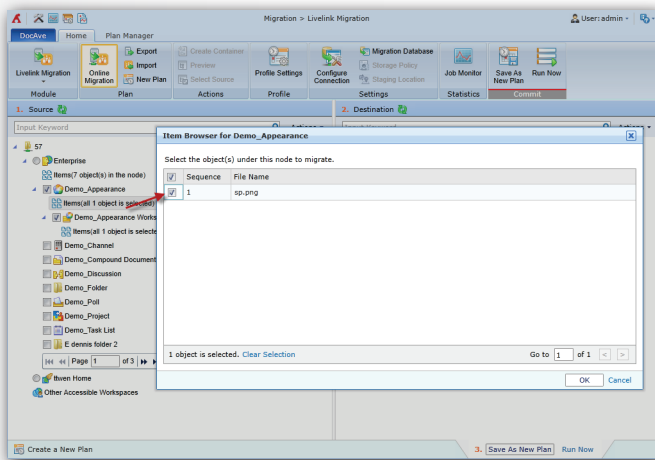
OpenText Content Server (Livelink) has been used in the past as a knowledge collaboration, information retrieval, and business process automation platform. In recent years, however, many organizations have recognized SharePoint’s superior capabilities in these areas and are looking to migrate their Livelink data into SharePoint Server 2016, SharePoint Server 2013, and SharePoint Online. DocAve Livelink Migrator provides an efficient and cost-effective approach to seamlessly migrate from Livelink to SharePoint.



FREE
30-DAY TRIAL

TECHNICAL OVERVIEW

- Delegate migration plan management based on administrative roles
- Scan source content prior to migration to identify the scope of migration, and detect any illegal characters, user permissions, user names, user domains, and other Livelihood elements that must be mapped in order to migrate successfully into SharePoint
- Extract data – including enterprise workspaces, domain workspaces, my workspaces, projects, channels, discussions, polls, task lists, task groups, tasks, milestones, compound documents, appearances, folders, appearance workspace folders, URLs, short cuts, generations, text documents, document versions, XML DTD, categories, category versions, and permissions – from Livelihood with all associated metadata and migrate it to its mapped SharePoint objects
- Migrate content according to business needs with granular content selection and customizable filtering options based on content properties including file size, owner, created and modified time, pop-up choices, as well as custom metadata, and perform test runs to validate migration plan configurations
- Automatically compress and migrate files that are natively blocked by SharePoint 2016, SharePoint 2013, or SharePoint Online
- Perform full and subsequent incremental migrations to keep network bandwidth resources optimized, only migrating content that has been updated since the last migration
- Bring your own Azure storage, or let DocAve automate the creation, encryption, and disposition of temporary Azure storage required for High Speed Migration at no extra cost
- Automate construction of your new SharePoint environment on-the-fly during your migration
- Preserve all metadata – including security settings, attributes, and properties – with full fidelity, utilizing customizable mappings to properly represent Livelihood elements and quickly take advantage of SharePoint's features such as Managed Metadata
- Create dynamic rules based on out-of-the-box interfaces to customize mappings and filter policies in order to meet specific business needs, including the ability to create new Managed Metadata, merge/split columns, and replace column values in the destination
- Migrate online over existing networks, or offline to securely migrate data across firewalls



Point-and-click migration simplifies the transfer of content into SharePoint.

For a comprehensive list of new features in this release, please view our [DocAve 6 Service Pack 8 Release Notes](#).

How to Buy DocAve

Call: 201.793.1111

E-mail: Sales@AvePoint.com

Evaluate DocAve for free at:
www.AvePoint.com/download

AvePoint Global Headquarters

525 Washington Blvd. Suite 1400
Jersey City, NJ 07310

Phone: 201.793.1111 Fax: 201.217.8709



For US Government Organizations:

DocAve can be purchased directly from
AvePoint or through the GSA website at
www.GSAadvantage.gov.

See why you should choose AvePoint as a strategic SharePoint partner, visit www.avepoint.com/about.

Join the AvePoint community at www.avepoint.com/community.

Accessible content available upon request.