

Microsoft® SharePoint® and Office 365 Migration with DocAve Migrators

Quickly consolidate enterprise content from legacy systems or previous Microsoft SharePoint versions into SharePoint Server and SharePoint Online.

Key Benefits



Pre-Migration Discovery

Inventory source environments with detailed discovery and pre-scan, to inform your migration project planning – including required mappings, prioritization, and content or customizations requiring re-work.



Effective and Flexible Migration

Easily transfer content – granularly or in bulk – from legacy repositories to SharePoint and Office 365 with a simple point-and-click interface. Flexible job scheduling can maintain coexistence, and reduce time to value of your new environment.



Legacy Asset Protection

Minimize business user interruption by ensuring critical information residing in legacy content sources – including all associated metadata – is preserved and available in SharePoint or Office 365.



High-Speed Migration for Office 365

Migrate large quantities of content from file systems, Livelink, SharePoint Server, or other legacy systems to Office 365 quickly and easily, to overcome throttling limitations and accelerate your cutover to the cloud.

Migration to SharePoint and Office 365 Made Easy

DocAve Migrators provide a fast, efficient, and cost-effective solution for migrating business-critical content from various electronic repositories into SharePoint 2016, SharePoint 2013, and Office 365 – SharePoint Online and OneDrive for Business. DocAve's innovative and reliable data transfer is unique in its ability to granularly migrate content down to individual items while retaining all associated metadata. Easily plan, schedule, and implement the consolidation of multiple content sources into the platform – thereby maximizing return on investment and gaining the most value from Microsoft's latest release.

Pre-Migration

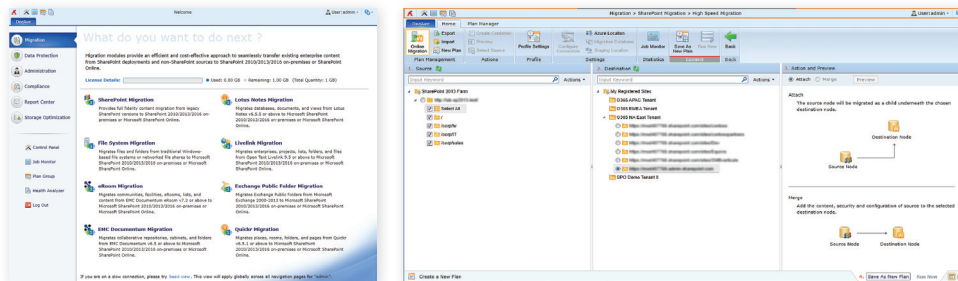
- Scan source content prior to migration to identify the project’s scope as well as detect any illegal characters, user permissions, user names, user domains, and other legacy elements that must be mapped in order to migrate successfully into SharePoint or Office 365
- Configure migration plans according to business needs with granular content selection, as well as customizable filtering options based on content properties, and perform test runs to validate migration plan configuration
- Bring your own Azure storage, or let DocAve automate the creation, encryption, and disposition of temporary Azure storage required for high-speed migration at no extra cost

Migration with Full Fidelity

- Preserve all metadata – including security settings, attributes, and properties – with full fidelity, utilizing customizable mappings to properly represent legacy elements and quickly take advantage of the latest SharePoint and Office 365 features such as managed metadata
- Migrate workflows – including those created with SharePoint native functionality, SharePoint Designer, and Nintex
- Migrate actions – including user alerts, views, customized forms, Nintex forms, and InfoPath forms – to Office 365 – SharePoint Online
- Perform full and subsequent incremental migrations to keep network bandwidth resources optimized, only transferring content that has been updated since the last migration
- Migrate online over existing networks, or offline to securely transfer data across firewalls
- Migrate into pre-created sites, or create containers on the fly

Minimal Business Disruption

- Keep source and destination environments in sync with customizable scheduling to minimize business disruption during the course of the migration project, allowing users to continue working on source environments until the destination SharePoint environment is approved for rollout
- Prioritize existing migration plans to ensure projects are executed according to organizational timetables
- View and track the migration project status through detailed job reports to monitor progress and validate migrated content and sites before end-user rollout



Point-and-click migration simplifies the transfer of content into SharePoint.

Supported Migration Sources		Supported Migration Sources
<ul style="list-style-type: none"> • Documentum eRoom 7.2 & above • Exchange Public Folders 2000-2013 • EMC Documentum Documentum 5.3 SP6 & above • File Systems & Networked File Shares 	<ul style="list-style-type: none"> • Lotus Notes 6.5.5 & above • Lotus Quickr 6.5.1 & above • OpenText Livelink 9.5 & above • Microsoft Office SharePoint Server (MOSS) 2007, SharePoint Server 2010, & SharePoint Server 2013 	<ul style="list-style-type: none"> • SharePoint Online • OneDrive for Business • SharePoint Server 2016 • SharePoint Server 2013 • SharePoint Server 2010 • SharePoint Foundation

For a comprehensive list of new features in this release, please view our [DocAve 6 Service Pack 10 Release Notes](#).

How to Buy AvePoint Products

Contact: 201.793.1111 | Sales@AvePoint.com

AvePoint Global Headquarters | 525 Washington Blvd, Suite 1400 | Jersey City, NJ 07310

Start your free trial today: www.avepoint.com/download