

Microsoft 365 Migration with FLY

Swiftly consolidate and migrate your customer's on-premises or cloud content into Microsoft 365

Resolve Your Customers' Migration Situation in Three Easy Steps



STEP 1:

Analyze

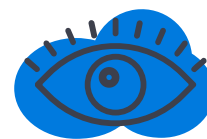
Know what's relevant and important, or just collecting dust before their move. Understand your customers' existing information architecture to avoid potential risks or pitfalls, to improve migration project planning.



STEP 2:

Migrate

Move entire drives, mail instances, site collections, or individual lists and libraries to achieve a desired end goal with drag-and-drop ease. Then map, filter, and schedule the move, or just migrate in real time.



STEP 3:

Monitor

Track migration status and progress on the dashboard, validate their migration progress, generate reports that highlight actions taken, and always be in the know with automated updates sent directly to stakeholders.

FLY Migration for Microsoft 365



FLY whizzes through the consolidation and migration of your customer's on-premises or cloud-based mail, file shares, and collaborative content into Microsoft 365. Tight timeline or budget? Our easy, breezy user experience guarantees you'll look like a pro! With flexible licensing options—like flat, fixed rate licensing for unlimited content—costs will keep in check...and dollars will migrate into your bank account!

STEP 1:

 **Pre-Migration Analysis**

- **Know the risks.** Identify customized web parts, site templates, web pages, or groups that require updating, mapping, or deleting.
- **Get the details.** Understand their existing information architecture, data size, users, workflows, site activity levels, and customizations. Export to CSV for deeper analysis.
- **Create a plan.** Create a migration plan according to their project timetables – define the scope, filter policy, method, and schedule. Plans can be reused in the future. Use Plan Groups to apply schedules in bulk, across multiple sources for increased efficiency.

STEP 3:

 **Monitor Using Built-in Dashboards or Power BI Templates**

- **Track the progress.** Monitor their migration status and progress on the built-in dashboard, or by setting up a SQL connection to leverage our migration database. Create dynamic reports for Throttling, Performance, migration progress, and more with our Power BI templates!
- **Validate their migration.** Report on migrated data volumes as well as site, list, library, and item counts. Understand migration trends across sources and destinations.
- **Automated Outlook configuration.** FLY Assist can be installed automatically to complete the final Outlook configuration tasks or sent to end users to guide them through the final steps.
- **Exec-level analysis.** Download or email executive reports on job count and status, object count and status, and migration trend analysis to highlight the actions taken during the migration.

STEP 2:

 **Migrate using FLY Server / Desktop**

- **Drag and drop.** Move their content from on-premises (SharePoint 2010, 2013, 2016, 2019, Exchange, Exchange Public Folder, PST files, and File shares) or the cloud (Google Drive, Gmail, IMAP/POP3 mailboxes, Slack, Box, DropBox or other Teams or Microsoft 365 instances) into Microsoft 365 with drag-and-drop ease.
- **High speed.** Migrate at top speeds using built-in Microsoft best practices. Use prime APIs to bulk upload the content within their migration scope into Azure BLOB storage plus App tokens for Microsoft 365 authorization to minimize throttling risks.
- **Take only what they need.** Migration Policies can filter content based on properties or metadata and selectively include or exclude granular objects (webparts, navigation, Apps, views, permissions, and even content!) so you can take what's relevant and leave the rest behind.
- **Tenant-to-tenant migration.** Migrate their SharePoint Online, Exchange Online, Teams, and Groups between different Microsoft 365 tenants.
- **Transform their data.** Comprehensive mapping ensures data from unlike systems are properly reflected and retained.
- **Take advantage of Microsoft 365 features faster.** Convert mailboxes to Group type, map metadata into Managed Metadata or Labels, even migrate content into Teams' sites.
- **Migrate on their time.** Set up a schedule or migrate in real time.
- **Resume or rerun failed or stopped jobs.** Pick up the job from where it stopped

Currently available via our Distribution network!

elements.avepoint.com/buy