

# Modern Multi-Tenant Management

for Microsoft 365, Dynamics 365, Salesforce and Google Workspace Managed Service Providers

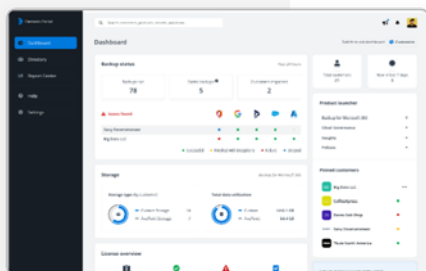
## The Challenges MSPs Face

The rush to cloud has forced businesses to move quickly. While service opportunities have increased for MSPs, administrative tasks are multiplying. Ongoing cycle of customer onboarding, monitoring, enforcement and reporting makes it difficult to scale.

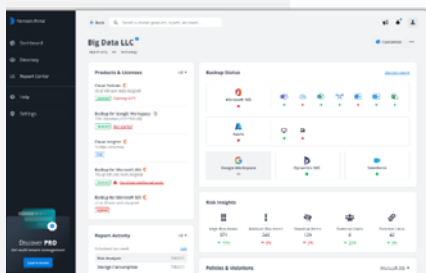
Elements portal is the modern multi-tenant management, purpose-built to improve operational efficiency for MSPs. Elements PRO offers additional tooling that automates your workflow, saving you time and allowing you to focus on new revenue streams to grow your business.

## We Reimagined the Partner Platform

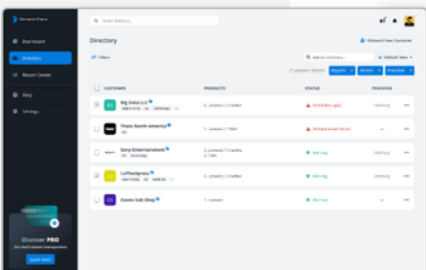
The modern multi-tenant management drives new revenue opportunities through increasing internal productivity and efficiency. Our platform addresses 3 key MSP needs:



**Partner Operations Center** gives full visibility and opportunity to upsell new service offerings. It is everything MSPs need to be informed about the operational and financial insights of your business.



**Customer Management Center** is the detail view of each customer/tenant. See detailed information for each of your customers and help manage, enable and grow your customers technology.



**Client Directory** leverages Elements PRO capabilities for easy provisioning and templating that simplify deployment and support automation across each of your customers. This ultimately saves you time and condenses week's worth of work into 2 easy steps.

## About Elements:

Elements is built on AvePoint Online Services, a 100 percent Microsoft Azure-hosted Software-as-a-Service (SaaS) platform that helps companies take advantage of Microsoft 365's benefits – without compromising control. Elements solutions are sold exclusively to and through our partners, making it even easier for businesses of any size—and their managed services providers—to take advantage of AvePoint's powerful technology. Whether you have just one, or multiple tenants, you have the ability to offer the ultimate collaboration resilience for your end-user customers.



**Access Monitoring and Control**



**Backup and Disaster Recovery**



**Provisioning and Management**



**Secure Migration**

AvePoint Online Services is trusted by over 8 million cloud users, allowing partners, business users, decision makers, and IT administrators to migrate, backup, and manage collaboration workspaces and CRM data.

View our [Confidence Platform Security Brochure](#) or visit our [Trust Center](#).

**“ No other solution gives us the capability to operate these kinds of managed services on behalf of our clients.”**

David Huseonica, President and CEO, Cloud|AG



Check out the **Elements Portal** Today!

Learn more about [Elements Portal](#) and [AvePoint Partner Program](#)!