

Machine Learning in AvePoint Compliance Guardian

There are many analysis technologies in AvePoint Compliance Guardian to help decipher unstructured data in different ways. Used alone or combined together, they can help detect many things – from defined patterns, keywords to context, and even similarity. There is no substitute, however, for the intuitive way a human can “feel” a shared pattern among documents.

To reduce the instances of false-positives, a new type of check based on machine learning is now available in AvePoint Compliance Guardian. Machine learning can take sample documents and create an output that can accurately discover similar documents in new content. This will revolutionize the way that documents are classified and content is sorted while reducing the human effort required to accurately discover enterprise content.

How It Works

Using sophisticated machine learning algorithms, AvePoint Compliance Guardian is able to deduce common statistical patterns within a document, train the system to recognize these patterns, and then use this information to analyze similar documents. Building a learned model is as simple as taking known content and feeding it into the tool. This will generate a check that will be placed into AvePoint Compliance Guardian and can be used to scan new content.

During the training process, the machine learning algorithms will perform multiple iterations of model calculations with different sample allocation strategies to find the model that is most accurate. This process will typically take more computation resources, but after the model is finalized it can quickly predict new documents.

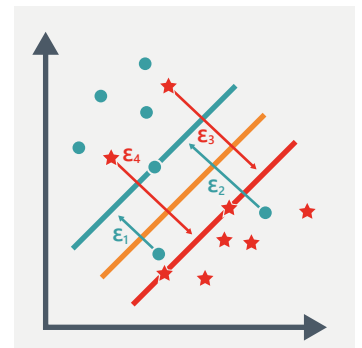
Keep in mind that, although machine learning is an incredible tool, we must remember that it is not a one-size-fits-all solution. When it comes to content like personally identifiable information (PII), pattern-based checks remain the best solution. However, machine learning is another powerful tool in your toolbox.

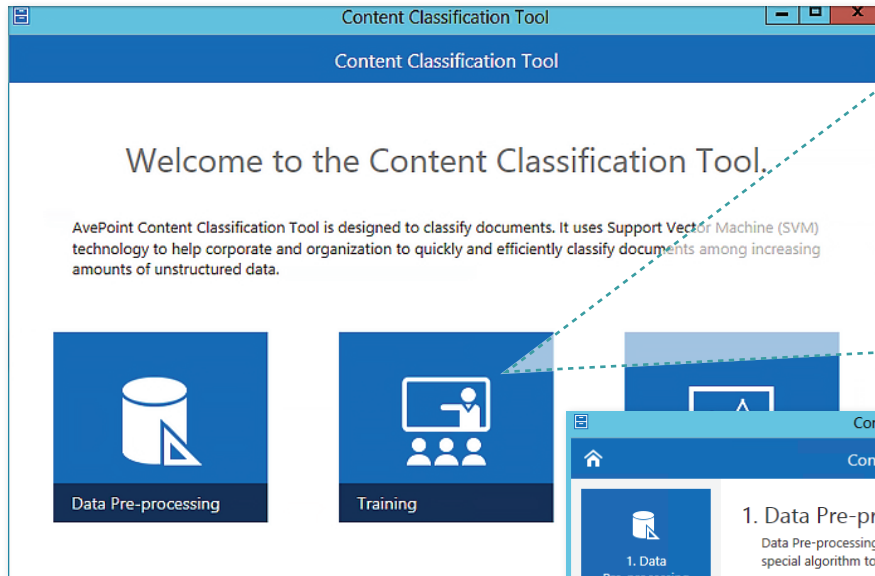
How to Use It

The process of adding a machine learning check to your AvePoint Compliance Guardian deployment is simple. There are two primary steps to implementation. You can perform these steps locally on any machine, and there is no need to upload data to the cloud, so your data will never leave your own environment.

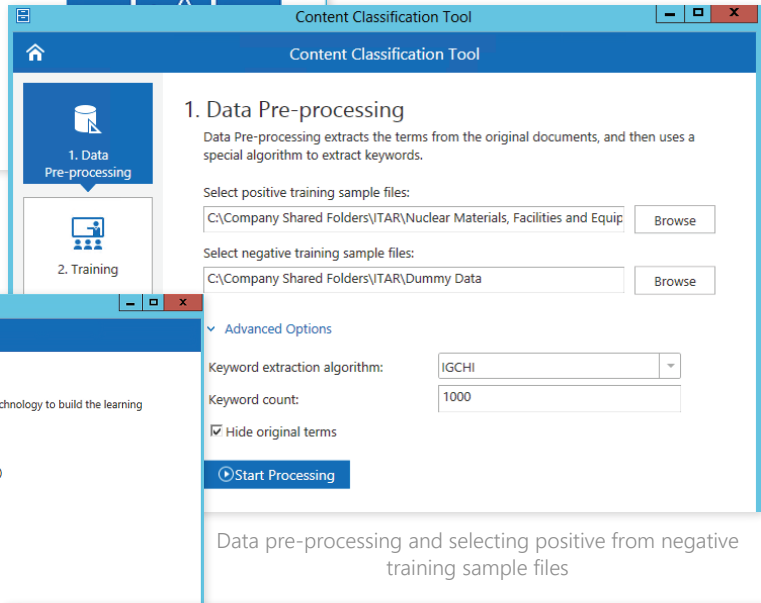
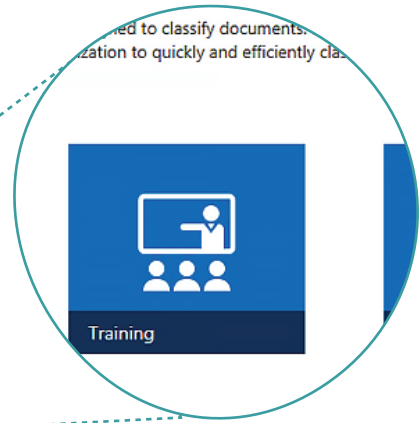
Step 1: The first step is to gather training samples. These samples will be used to build out your machine learning data. Feeding these sample documents into the machine learning tool will create the analysis that is needed to drive step two.

Step 2: The second step uses the prediction model to create the check and predict new documents. This will run in a scan, and is incredibly quick based on the learned data. The key here is that you are taking your document inputs and generating discoverable classifications as an output. These classifications can then be used in your environment to generate accurate classifications, and can be the first step in a successful data governance strategy.

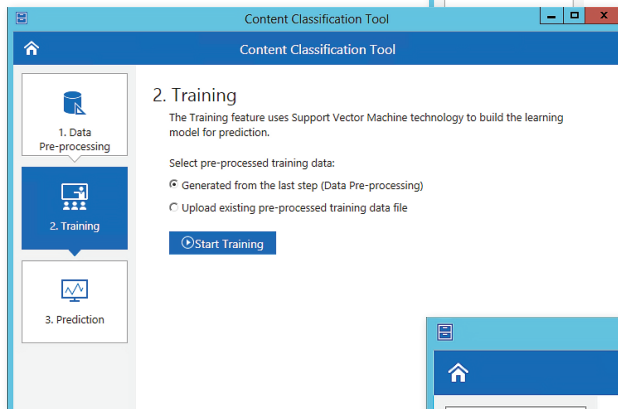




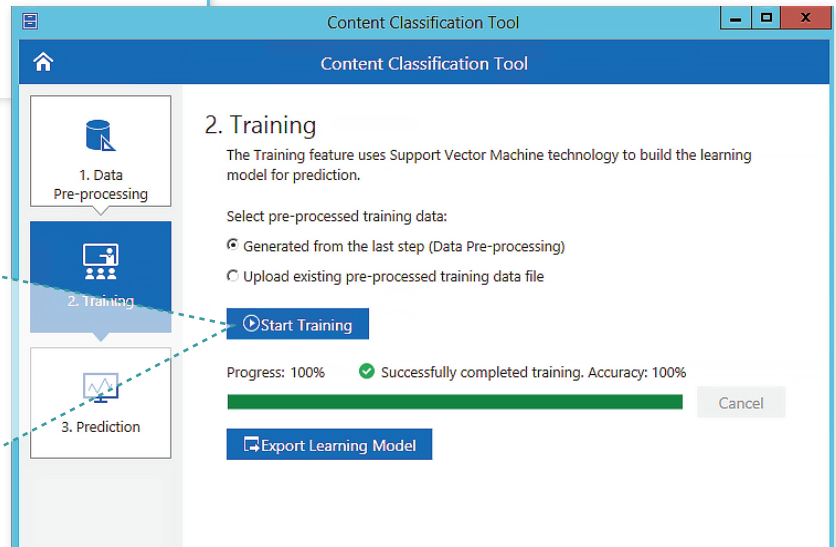
The Content Classification Tool in AvePoint Compliance Guardian



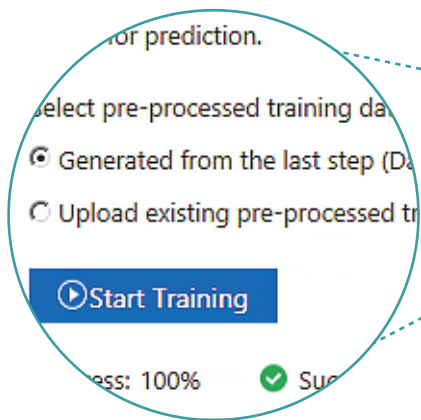
Data pre-processing and selecting positive from negative training sample files



Building a learning model for prediction



Exporting the learning model to be used as a check in AvePoint Compliance Guardian for prediction



How to Buy AvePoint Products

Contact: 201.793.1111 | Sales@AvePoint.com
 AvePoint Global Headquarters | 525 Washington Blvd, Suite 1400 | Jersey City, NJ 07310

Start your free trial today:
www.avepointonlineservices.com