



Deliver full-fidelity, item-level restore capabilities directly from Microsoft SQL Server backups or live content databases for fast SharePoint Server 2019, SharePoint Server 2016, SharePoint Server 2013, and SharePoint Server 2010 content recovery.

DocAve SQL Server Data Manager for Microsoft® SharePoint® SQL Server® Data Management



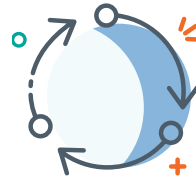
Content Availability Optimization

Optimize content availability in the event of a disaster or network failure with fast recovery of entire SharePoint databases or granular content in-place or out-of-place, even to file shares.



Cost Reduction

Reduce the total cost of ownership of your content backup strategy by utilizing SQL Server's native, database-based backup with DocAve SQL Server Data Manager's full fidelity granular recovery.



Business Continuity

Minimize downtime and restore times with granular recovery of SharePoint content directly from SQL Server backups or a live database to reduce business disruption in the event of data loss or corruption.

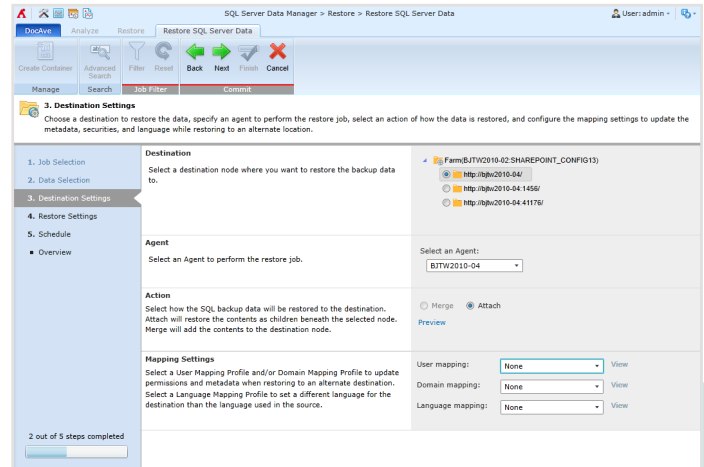
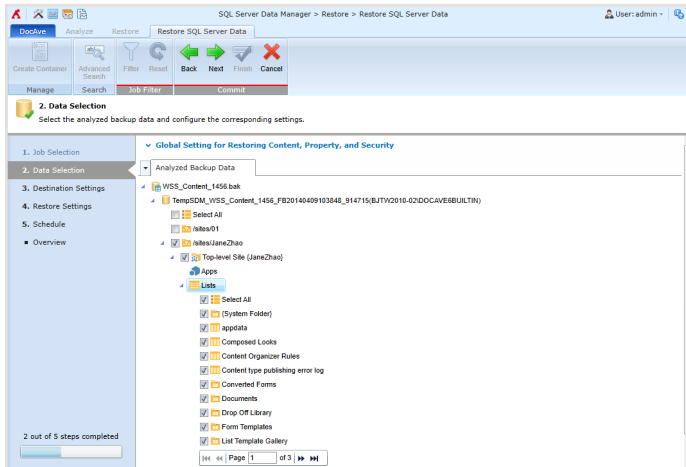


Critical SLA Satisfaction

Satisfy critical business demand and aggressive Service Level Agreements (SLAs) with simplified staging of existing SQL Server database backups and direct, full-fidelity restores of granular SharePoint content.

Fast, Item-Level Recovery Solution for SharePoint

DocAve SQL Server Data Manager delivers full fidelity, item-level restore capabilities directly from SQL Server backups or a live database, ensuring fast and efficient SharePoint recovery. This component complements DocAve Backup and Restore, which delivers the comprehensive item-through-platform level protection for SharePoint that businesses demand.



Configure the restore plan settings, including data selection, destination, and schedule.

- Perform item-level restores of SharePoint content from existing SQL Server Data backup, VHD or VHDX files or a live database with full fidelity
- Analyze SQL Server backups, transferring data to a temporary SQL Server database to enable data retrieval
- Configure a reusable staging policy to specify the SQL Server backup files and temporary database, input database access credentials, and prioritize database space allocation if temporary database thresholds are met or exceeded
- Quickly identify files for restoration with customizable filter policies based on file names or metadata
- Utilize AvePoint's InstaMount technology to enable fast recovery of individual items to production environments from a full database backup without first staging the database
- Input a specified time range to quickly identify available backup data for restoration, and view detailed backup file information such as the job status (e.g. complete, complete with exception) as well as whether InstaMount was enabled

- Granularly select SharePoint content from the site collection down to item level for restoration, including options to only restore properties or security settings of the selected content
- Restore SharePoint components including Recycle Bin data, workflows, item-dependent columns and content types, users or groups, BLOB data, apps, as well as item versions to satisfy different critical business needs
- Update permissions, metadata, or language information upon restoration with comprehensive user, domain, and language mapping
- Generate detailed job reports and send email notifications to selected users or groups
- Enable the automatic deletion of databases that are used to store analyzed SQL Server backup files to eliminate data redundancy
- Obtain a comprehensive overview of analysis or restore job statuses and counts from a specific period of time through a centralized dashboard

For a comprehensive list of new features in this release, please view our [Release Notes](#).

How to Buy AvePoint Products

201.793.1111 | Sales@AvePoint.com | Start your free trial today: www.avepointonlineservices.com
 AvePoint Global Headquarters | 525 Washington Blvd, Suite 1400 | Jersey City, NJ 07310