



Business-aware and comprehensive protection of SharePoint Server 2019, SharePoint Server 2016, SharePoint Server 2013, SharePoint Server 2010, virtual machines (VM), SharePoint Online, and OneDrive for Business.

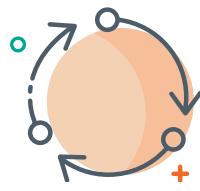


Microsoft® SharePoint® Backup & Restore with **DocAve Backup & Restore**



Comprehensive Backup

Protect your organization from data loss with truly comprehensive backup for your entire SharePoint environment, including all content, customizations, solutions, workflows, apps, features, and the VMs hosting your SharePoint servers.



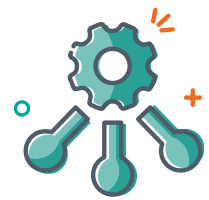
Business Continuity

Minimize business disruptions caused by service interruptions or accidental deletions with efficient and fast recovery of all SharePoint components, databases, indexes, and configurations through advanced snapshot technology.



SLA Satisfaction

Satisfy even the most aggressive Service Level Agreements (SLAs) by minimizing downtime, data loss, and restore times with granular restore of select SharePoint components, including content security and properties.

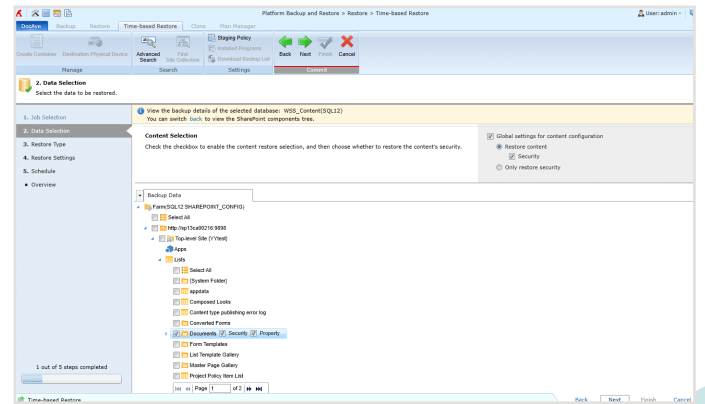
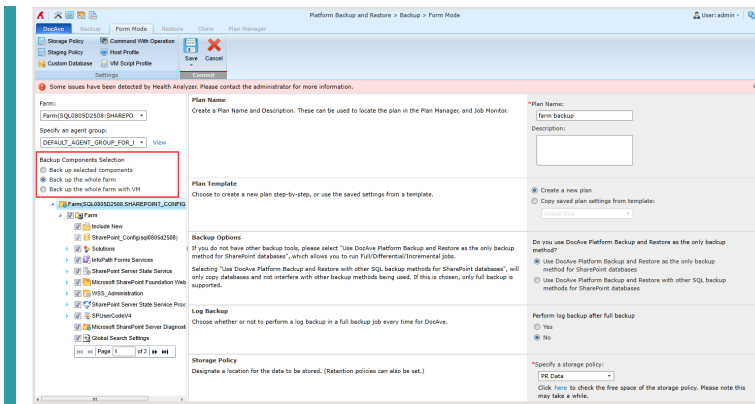


Centralized Management

Track, manage, and report on all backup and restore processes through a centralized management console to monitor and enforce compliance with SharePoint SLAs.

Fast, Flexible, & Intelligent Data Protection Solutions for SharePoint

DocAve Backup and Restore for SharePoint provides full-fidelity backup and recovery – from individual content items to entire SharePoint environments and all of their farm-level components – maintaining all metadata, security settings, and version histories. Featuring a highly intuitive user interface, enterprise-strength scalability, and deep integration with leading hardware providers, DocAve Backup and Restore offers simple and truly comprehensive SharePoint protection.



Quickly create platform or granular backup and restore plans with DocAve's easy-to-use wizard.

COMPREHENSIVE BACKUP

- Comprehensive backup of an entire SharePoint farm or select components, as well as Microsoft 365 SharePoint Online and OneDrive for Business, including all content, configurations, application servers or databases, and the VMs hosting your SharePoint servers whether on premises, in your private cloud, or a hybrid Microsoft 365 deployment
- Preview and double-check backup documents before performing a document restore to ensure accuracy
- Full, incremental, and differential backup capabilities enable backup plans and schedules to focus on frequent backup of high-priority or failed data from previous jobs, improving backup operations and storage efficiency
- Backup to up to 20 most commonly used storage platforms, including Net Share, Amazon S3, Microsoft Azure Storage, NetApp Data ONTAP, OneDrive, and more

CENTRALIZED MANAGEMENT

- Protect multiple SharePoint and Microsoft 365 instances – whether hosted on premises, a hybrid deployment, or on cloud VMs – to centrally manage SLAs from a single interface
- View all web applications, site collections, or sites that have been backed up through a comprehensive, centralized dashboard

FAST, GRANULAR RECOVERY

- Full-fidelity and granular restore of all SharePoint content, including web applications, site collections, sites, apps, Recycle Bins, lists, libraries, items, workflows, configurations, permissions, metadata, and version histories
- Reduce the complexity of total farm recovery with intuitive clone or rebuild wizards, allowing you to easily replicate or rebuild farms or virtual machines (VMs) with the same content, configurations, and topology
- Repair one or multiple SharePoint servers within the specified farm with a one-click fix capability to reduce response time when system errors occur – such as failing to open the Central Administration page
- Rapidly restore SharePoint content with robust VSS, VDI, or advanced NetApp snapshot technology, reducing data recovery time to minutes to achieve robust RPOs and RTOs
- Restore in-place or out-of-place, including to a file system, for anytime access to critical content
- End-user restore will reduce the burden on IT

For a comprehensive list of new features in this release, please view our [Release Notes](#).

How to Buy AvePoint Products

201.793.1111 | Sales@AvePoint.com | Start your free trial today: www.avepointonlineservices.com
 AvePoint Global Headquarters | 525 Washington Blvd, Suite 1400 | Jersey City, NJ 07310