

Microsoft® SharePoint® Integration with DocAve Connector

Present and manage enterprise documents and media content distributed in legacy storage systems directly in Microsoft SharePoint Server 2019, SharePoint Server 2016, SharePoint Server 2013, and SharePoint Server 2010 without migration.

Key Benefits



Simplified Content Management

Simplify content management by utilizing SharePoint's powerful document management features – including workflow, approval, versioning, and full-text search – on all enterprise content distributed in other storage devices.



Unified Point Of Access

Provide end-users with a single point of access to all enterprise digital assets by seamlessly presenting file share content in SharePoint.



Mobile Previews

Enhance mobile content access by offering preview displays of large files (greater than 2 GB), rich media, and other file share content – such as CAD engineering files – within SharePoint.



Blocked File Type Support

Expose large files, rich media, and file types natively blocked by SharePoint, including files more than 2 GB, as links available to view and download in SharePoint without violating Microsoft support contracts.



No Migration

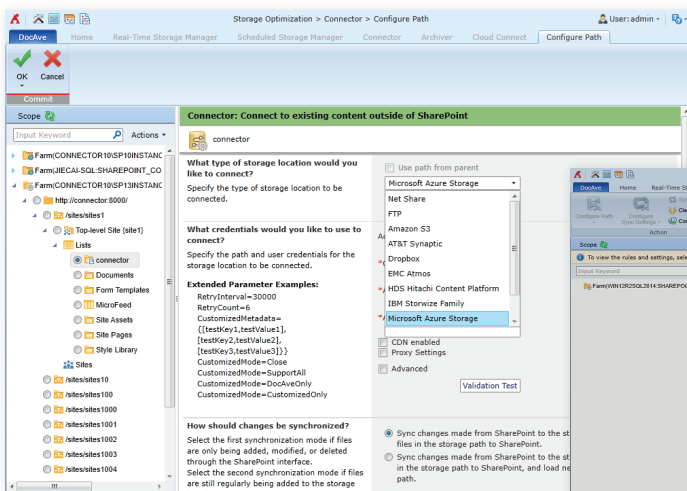
Minimize costs by avoiding disruptive migration projects and reducing the amount of data stored on SQL Server® content databases.

Unify Enterprise Content Delivery in SharePoint without Migration

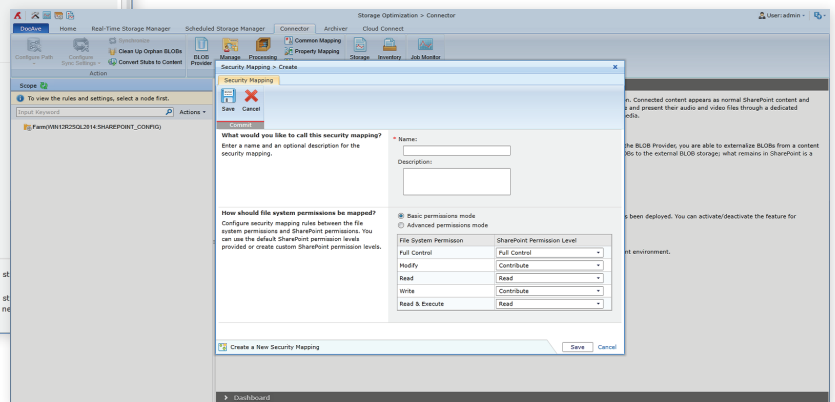
With DocAve Connector for SharePoint, collaborate upon network file shares and cloud storage resources directly through SharePoint without the need to migrate content. Connected content – including documents as well as audio or video files – are made completely transparent to SharePoint through existing or customizable SharePoint libraries. Manage connected content with all of SharePoint's powerful document management functionality, including permissions management, workflows, alerts, and versioning.

Technical Overview

- Manage enterprise content distributed in legacy storage systems with all of SharePoint's management and collaboration features utilizing Microsoft's external binary large object (BLOB) storage and remote BLOB storage APIs
- Connect any network addressable file share or cloud-based storage system – including Net Share, FTP, Amazon S3, AT&T Synaptic, Dropbox, EMC Atmos, HDS Hitachi Content Platform, IBM Storwize Family, Microsoft Azure Storage, Network File System, OneDrive for Business local folders, and Rackspace Cloud Files – directly to SharePoint platforms
- Customize content synchronization options, including one-way or two-way sync, scheduled or on-demand sync, maximum length of file and folder names, illegal characters replacement, version management for the connected files, as well as property and permission mappings between SharePoint and the connected storage devices
- Expose blocked file types and large files (larger than the web application maximize upload size – 2 GB) from storage locations as links available to view and download in SharePoint
- Associate file share data with any of SharePoint's security settings and permissions as well as standard and customized metadata fields
- Utilize SharePoint's native full-text search functionality, as well as Microsoft Office applications or third-party tools, to present and manage connected content just as if the content resided in SharePoint content databases
- Allow end users with the proper permissions to perform synchronization jobs directly from the SharePoint interface
- Stream and preview audio and video files directly to the browser via a dedicated media library that caches files for fast, intelligent delivery without migration or plugins
- Convert business-critical files from stubs to SharePoint entity files with one simple click
- Regularly and automatically clean up orphan BLOBs that exceed the retention period to optimize your storage
- Easily report on, inventory, view, and manage connected file share libraries using a centralized management console and dashboard for quick insight into connected content across SharePoint farms



Attach any supported network or cloud storage devices to SharePoint without the need for migration



Added Advanced Permission mode for Security Mapping.

For a comprehensive list of new features in this release, please review our [Release Notes](#).

How to Buy AvePoint Products

Contact: 201.793.1111 | Sales@AvePoint.com
AvePoint Global Headquarters | 525 Washington Blvd, Suite 1400 | Jersey City, NJ 07310

Start your free trial today:
www.avepoint.com/download