

Microsoft® SharePoint® and Office 365 Migration with DocAve Website Migrator

Automated, High Performance Web Content Migration to Microsoft SharePoint and Office 365.

Key Benefits



Pre-Migration Discovery

Inventory source environments with detailed discovery and pre-scan, to inform your migration project planning – including required mappings, prioritization, and content or customizations requiring re-work.



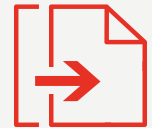
Centralize Web-based Assets with Precision and Speed

Reduce management and licensing costs, optimize system resources, and accelerate end-user adoption by unifying all web and portal elements in SharePoint.



Transform Static Web Resources into Collaboration-driven Assets

Utilize valuable legacy content in your SharePoint platform to unleash its full web content management and collaboration capabilities.



Business-Driven Deployment via Offline Storage Modes and Reusable Mapping Schemas

Optionally migrate web-based content to offline local stores to perform full testing prior to production deployment. Save and reuse customized mapping schemas to accelerate migration of multiple pages and sites.

Ease Migration to SharePoint from Websites

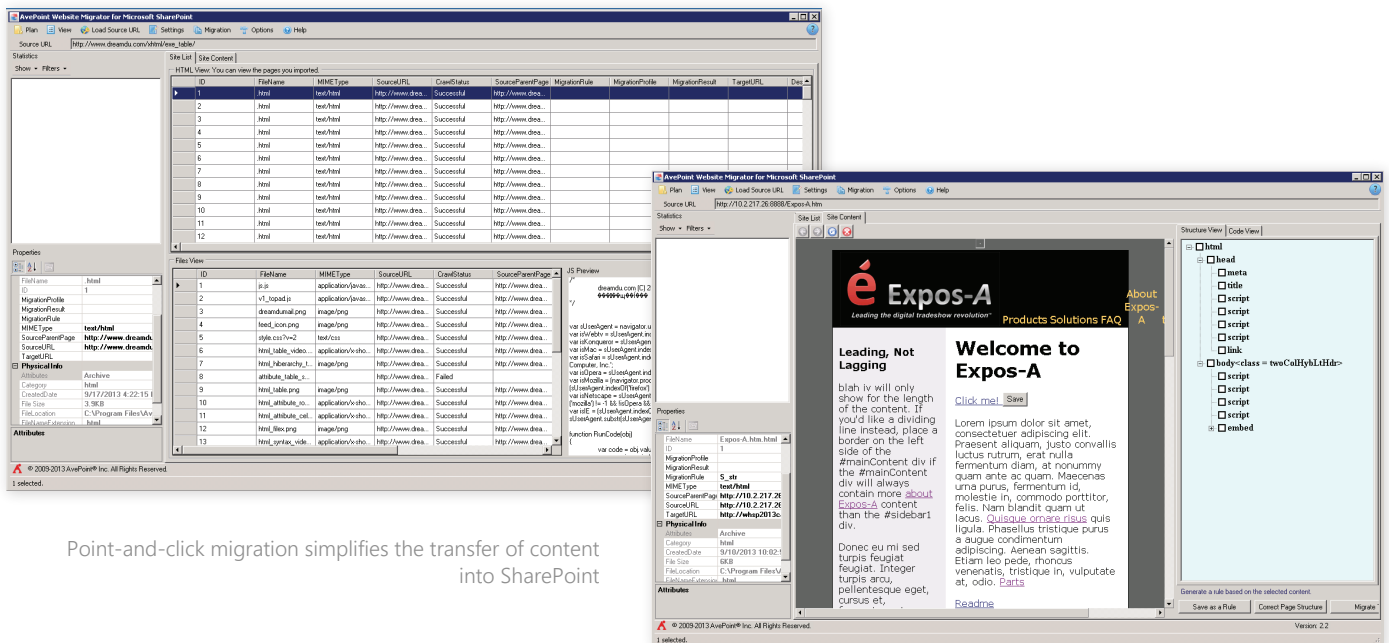
DocAve Website Migrator provides a reliable, efficient, and cost-effective solution for the organized and lossless transfer of web content into Microsoft SharePoint Server 2019, SharePoint Server 2016, SharePoint 2013, SharePoint 2010, SharePoint 2007, Office 365, SharePoint Online and OneDrive for Business. With comprehensive mapping of legacy artifacts to SharePoint elements, fully automated page link management, and optional remote migration using web services, this powerful tool drastically reduces the costs and stress normally associated with web application migration.

Pre-Migration

- Preview all migration content, documents, and images prior to migration execution
- Crawl source web content prior to migration, and generate integrated reports to provide itemized analysis of all elements in the source site, listing key information including crawl status, migration result, conflict status and explanatory comments
- Transfer the web content to a local offline environment for full testing before migrating to the production environment, then upload migration data to production with a single click
- Discover, sort, filter, search, and analyze all source content types, page templates, and site hierarchies via a single interface

Migration with Full Fidelity

- Migrate any HTTP/HTTPS accessible web content into SharePoint, including all code, HTML regions, embedded tables, related documents, and associated images – granularly or in bulk
- Fully map all source elements to the existing SharePoint framework using default site hierarchy maps or a customizable mapping interface to utilize SharePoint's Top Link Bars, Quick Launch Bar, Lists, Libraries, and Calendars
- Automated updates of all page links streamlines management and eliminates risk of human error
- Create customized, reusable Source-to-SharePoint mapping schemas to streamline migration of multiple pages and sites
- Use Website Migrator via web services to migrate to SharePoint environments, with no need to install an agent on SharePoint web front end server



Point-and-click migration simplifies the transfer of content into SharePoint

For a comprehensive list of new features in this release, please review our [Release Notes](#).

How to Buy AvePoint Products

Contact: 201.793.1111 | Sales@AvePoint.com
 AvePoint Global Headquarters | 525 Washington Blvd, Suite 1400 | Jersey City, NJ 07310

Start your free trial today:
www.avepoint.com/download