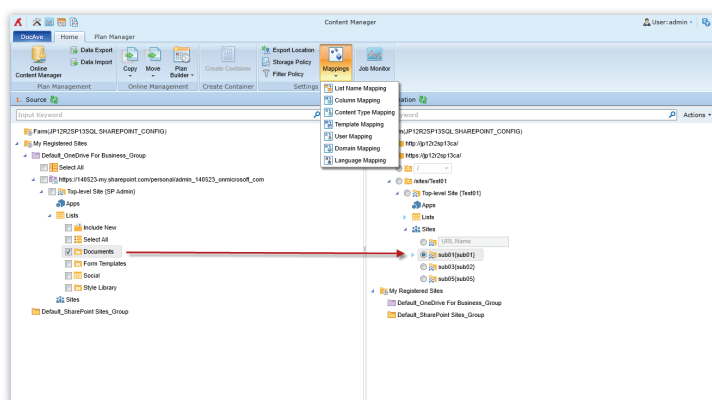


Microsoft® SharePoint® Content Management with DocAve Content Manager

Simplify internal content migration and enterprise restructuring for Microsoft SharePoint Server and SharePoint Online.

Simplified Content Management

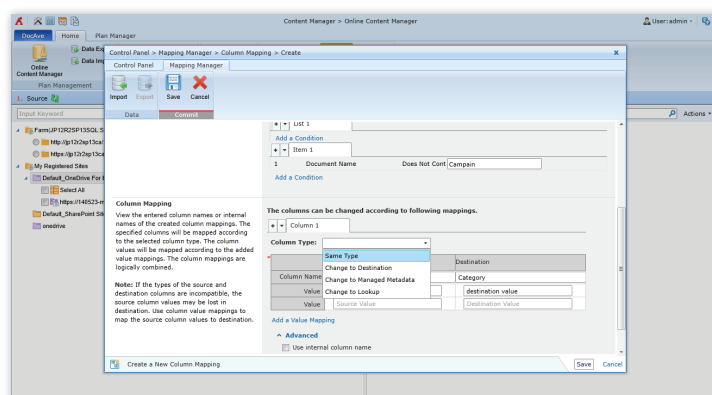
- Seamless Content Migration across Hybrid SharePoint Environments** - Seamlessly migrate content and manage hybrid SharePoint environments by copying or moving content, apps, user profiles, workflows (including those created with SharePoint native functionality, SharePoint Designer, and Nintex), forms (including InfoPath forms, customized forms, and Nintex forms), as well as additional features in SharePoint 2019 and Microsoft 365 across on-premises and cloud-based environments
- SharePoint Restructure** - Promote or demote sites on-the-fly and copy content – from list to list, library to library, or site to site – according to business requirements across multiple SharePoint environments or content databases
- Attach and Merge** - Attach and Merge features, simplify the promotion and demotion of sites or site collections for intuitive content restructuring
- Migration Result Preview** - Preview the content migration results including the destination SharePoint structure and the content from the source, before actually running the job
- Backup and Rollback** - Back up the source or destination environment before performing a copy or move action, and enable to do rollback to restore the original data



Simplified Content Migration and Management

Content Restructure With Full Fidelity

- Property Mapping** – Migrate, copy, move, and restructure content – including content externalized by DocAve Connector, DocAve Storage Manager, and DocAve Archiver – within or across different locations, servers, and farms with full fidelity by mapping list names, columns, content types, and templates



Map Source Column Values to the Specified Destination Column Values Based on Defined Conditions

- ## Reduced Deployment Time Windows

- ## Optimized User Experience

- [Desktop](#)
[Home](#)
Content Manager
[User admin](#)

Plan Manager

 - Data Export
 - Data Import
 - Copy
 - Move
 - File Actions
 - Create Container
 - Online Management
 - Create Container

Expert Location

 - Storage Policy
 - Filter Policy
 - Mappings
 - Job Monitor

Plan Management

Online Management Create Container

Settings Statistics

Job Status

Current Job: Empty | Range: Per Day | View: Full | Filter: None | Users: All Users | Job Status: Select All

From 2014-12-15 to 2014-12-23(UTC+08:00), you can customize the time range above.

Status	Count
Finished	~1350
Finished with error	~150
Failed	0
Skipped	0
Stopped	0

Export Location

Location	Count
OSD	0
1GB	0
2GB	0
3GB	0
4GB	0
5GB	0

Content Manager Plan

Plan Type	Count
Move	15
Copy	1481
Import	0
Export	0

[illegible]

For a comprehensive list of new features in this release, please review our [Release Notes](#).

Start your free trial today:
www.avepoint.com/download