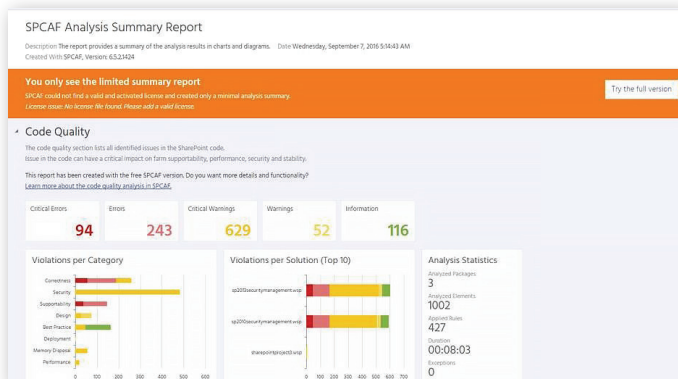


Microsoft® SharePoint® Deployment Management with DocAve Deployment Manager

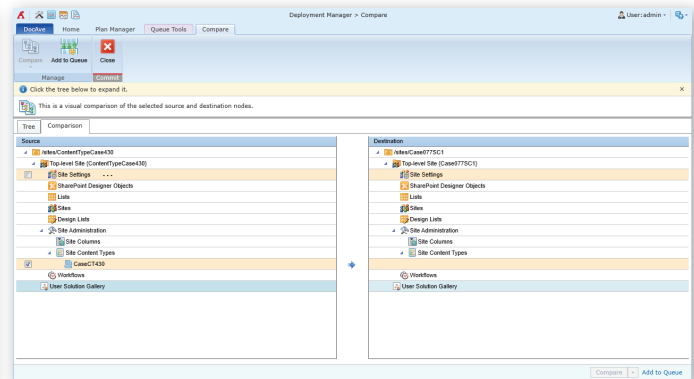
Automate Microsoft SharePoint Server and SharePoint Online implementation from staging to production.

Pre-Deployment

- **Source and Destination Comparison** - Compare source and destination SharePoint objects to quickly view object details and identify elements for propagation as well as execute propagation tasks from one object to another (or to multiple objects)
- **Comparison Reports** - Schedule or generate real-time .xls/.csv/.txt comparison reports for an overview of large environments or selected scopes
- **SharePoint Code Analysis Framework (SPCAF) Integration** - Scan and report on each customized solution before deployment to detect potential issues and risks to your environment, operational processes, and data
- **Backup and Rollback** - Automatically backup the destination environment before deployment for easy rollback
- **Security Trimming** - Utilize security trimming to grant or deny user/group permissions to run deployment jobs



SharePoint Code Analysis Framework (SPCAF) Report

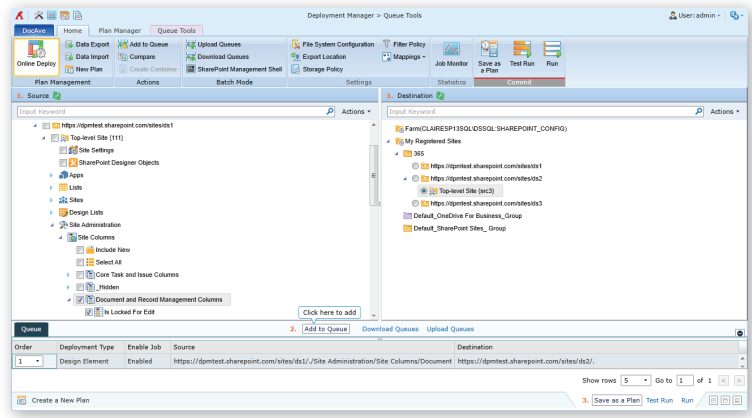


Source and Destination Comparison

Deployment of Sharepoint Objects with Full Fidelity

- **Support of Hybrid SharePoint Environments** – Deploy and manage content, design elements, web front-end (WFE) configurations, solutions, and shared services within or across SharePoint Server 2019 or Office 365 – SharePoint Online
- **Granular Deployment** – Granularly select SharePoint objects to deploy to other locations, including web applications, site collections, sites, lists, folders, items, apps, site and list settings, SharePoint Designer objects, site and list columns and content types, workflows, user or farm solutions, IIS site files, GAC, custom features, site definitions, and Managed Metadata Service

- **Custom Pattern Manager** – Create custom patterns for selected SharePoint objects and elements for easy deployment in one-to-one or one-to-many mode
- **Associated Metadata Deployment** – Choose whether to include all associated content settings (security, user profiles, and user content), workflow definitions (out-of-the-box SharePoint workflows, SharePoint Designer workflows, Nintex workflows, and Visual Studio workflows), and Managed Metadata terms during deployment
- **User, Domain, and Language Mapping** – Update permissions, metadata, or language information with comprehensive user, domain, and language mapping
- **WFE Local Files Deployment** – Configure restricted file types and paths to migrate eligible files or folders with security settings across file systems in SharePoint WFEs
- **Conflict Resolution** – Utilize flexible conflict resolution to skip, merge, replace, or overwrite web applications, site collections, sites, lists, apps, or items



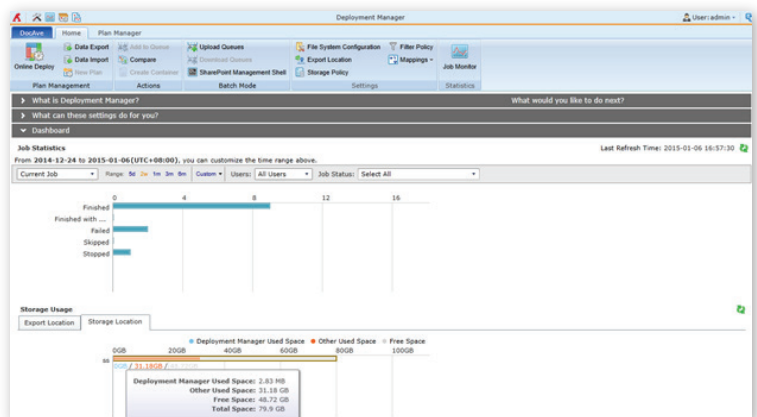
Granular Deployment

Flexible Plan Management

- **Online Deployment** – Minimize business disruption through plan-based online deployment with customizable scheduling options
- **Offline Deployment** – Offline deployment enables to best take advantage of slow or secured networks
- **Deployment Prioritization** – Manage deployment plan prioritization by downloading and uploading plan queues, or utilize the integrated SharePoint Management Shell to enable batch mode operation

Deployment Monitoring

- **Instant Email Notification** – Report on deployment tasks to track changes and notify stakeholders upon completion
- **Comprehensive Report Dashboard** – Provide a comprehensive report dashboard to view details of all deployment jobs



Comprehensive Report Dashboard

For a comprehensive list of new features in this release, please review our [Release Notes](#).

How to Buy AvePoint Products

Contact: 201.793.1111 | Sales@AvePoint.com
 AvePoint Global Headquarters | 525 Washington Blvd, Suite 1400 | Jersey City, NJ 07310

Start your free trial today:
www.avepoint.com/download