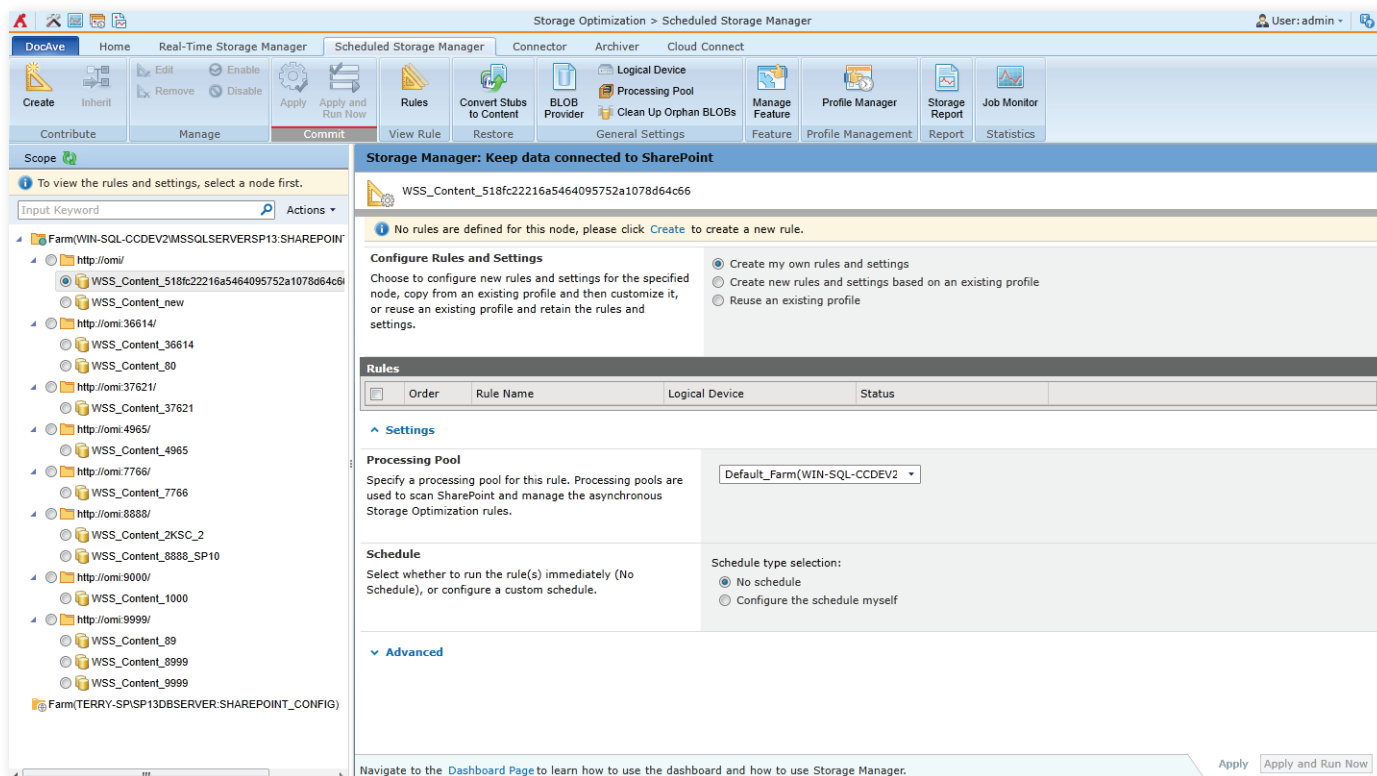


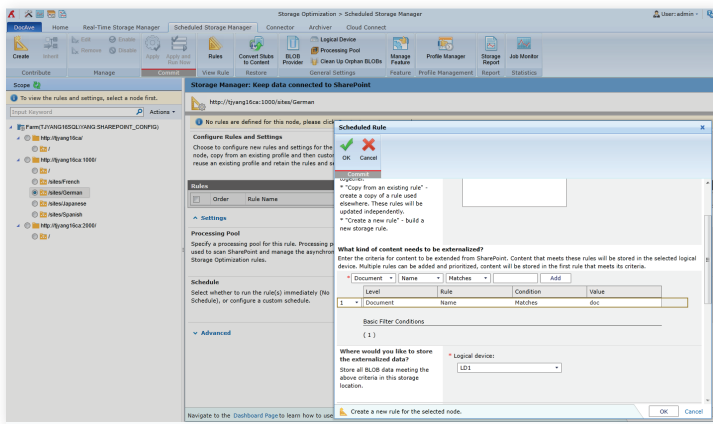
Microsoft® SharePoint® Storage Management with DocAve Storage Manager

Reduce accumulating storage costs and optimize platform performance for SharePoint Server 2019, SharePoint Server 2016, SharePoint Server 2013, and SharePoint Server 2010 with real-time or scheduled content externalization.

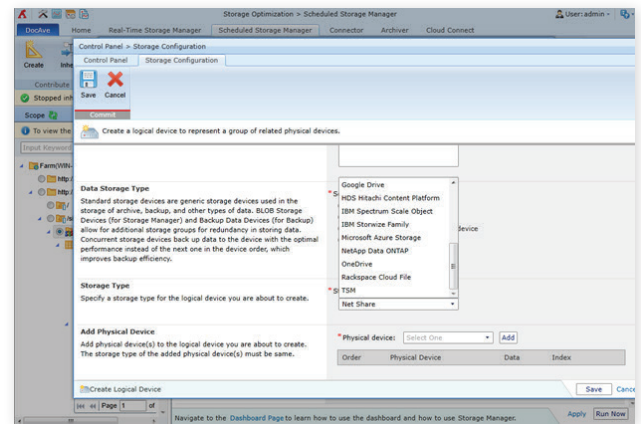
Blob Externalization Configurations

- **Flexible BLOB Externalization Rules** - Leverage multiple rules for real-time externalization based on file size, and combine with scheduled externalization based on metadata – including created or last modified time, name, content type, size, and/or customized columns – for truly comprehensive, flexible BLOB externalization
- **BLOB Externalization Level** - Easily externalize content as large as entire databases or as small as folders
- **Hierarchical Storage Management (HSM) Capabilities** - Externalize BLOBs to any network addressable file share, File Transfer Protocol system, or cloud-based storage system. Overlay externalization rules to leverage HSM systems for SharePoint content storage to optimize storage resources and costs





Flexible BLOB Externalization Rules

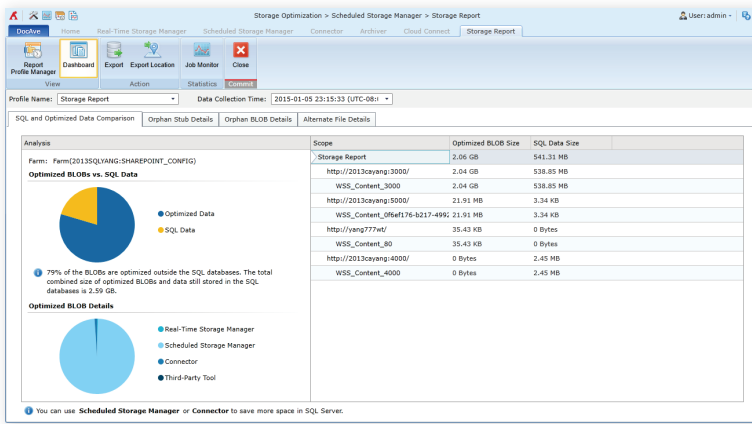


Multiple Storage Devices

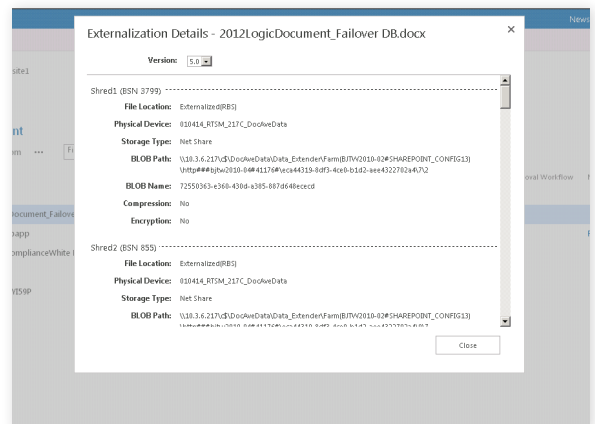
- **Support for Advanced Storage Systems** - Store BLOB content on leading hardware and cloud storage systems to leverage advanced features such as de-duplication, self-healing, and enhanced disaster recovery. Supported storage platforms include Box, Dropbox, and OneDrive, as well as advanced storage systems from EMC, Dell, NetApp, Microsoft Azure, Rackspace, and Amazon
- **BLOB Compression and Encryption** - Compress and encrypt the externalized BLOBs to reduce storage cost and protect BLOBs from unauthorized access
- **Alternate File Upload** - Provide end users with the capability to upload alternate file types natively blocked by SharePoint and files that exceed native SharePoint limitations as links to SharePoint, leaving BLOBs in the connected storage device to improve file management
- **Incremental Externalization** - Scan and evaluate only content modified since the last scan for externalization
- **Database Selection** - Leverage existing Report Center databases or SharePoint Content databases to log details of all finished and in-progress incremental jobs
- **Full-featured Content Management** - All content, including file types natively blocked by SharePoint and large files, offloaded to logical devices by DocAve Storage Manager can be managed using all of SharePoint's management and collaboration tools as if it were residing directly in SharePoint's SQL Server content databases
- **Seamless Integration with SharePoint Search** - All data residing in file-based storage is fully integrated with SharePoint's full-text search functionality, as well as all other search tools that leverage the standard SharePoint API

Storage Optimization Analysis

- **Report Dashboard** - View SQL and optimized data comparison, orphan stub details, orphan BLOB details, and alternate file details within a selected scope and export reports into .xls or .csv files (including both details and summary)
- **SQL and Optimized Data Comparison** - Compare optimized data against data found in SQL Server content databases, including the percentage of optimized data externalized by DocAve Storage Manager, DocAve Connector, or a third-party tool
- **Orphan Stub and BLOB Details** - Access graphs to easily view how many orphan stubs are in each database, the amount of space being occupied by orphan BLOBs, and in which physical devices orphan BLOBs are located
- **Alternate File Details** - View how many existing and orphan unsupported/large files are in your SharePoint environment, and where they are located
- **Email Notification** - Automatic e-mail notification can be sent to administrators to quickly address detected orphan stubs
- **Externalization Details** - Prove that files have been truly externalized



Report Dashboard



Externalization Details

Content Restore

- **Content Restore** - With one click, restore content from BLOB storage to the original SharePoint content database including stubs that may have been sent to the recycle bin

Orphan Stubs and Blobs Cleanup

- **Orphan BLOB Cleanup** - Periodically collect and clean up orphan BLOBs from BLOB storage devices
- **Digital Shredding** - Enhance record management and ensure BLOB deletions with Digital Shredding
- **Orphan Stub Cleanup** - Search for and clean up orphan stubs from SharePoint using the Orphan Stub Cleanup tool

For a comprehensive list of new features in this release, please review our [Release Notes](#).

How to Buy AvePoint Products

Contact: 201.793.1111 | Sales@AvePoint.com
 AvePoint Global Headquarters | 525 Washington Blvd, Suite 1400 | Jersey City, NJ 07310

Start your free trial today:
www.avepoint.com/download